

Extending synchronization periods for YieldPlanet and WuBook

You will learn:

1. How to extend synchronization periods for YieldPlanet and WuBook
2. How to synchronize these periods with the channel manager

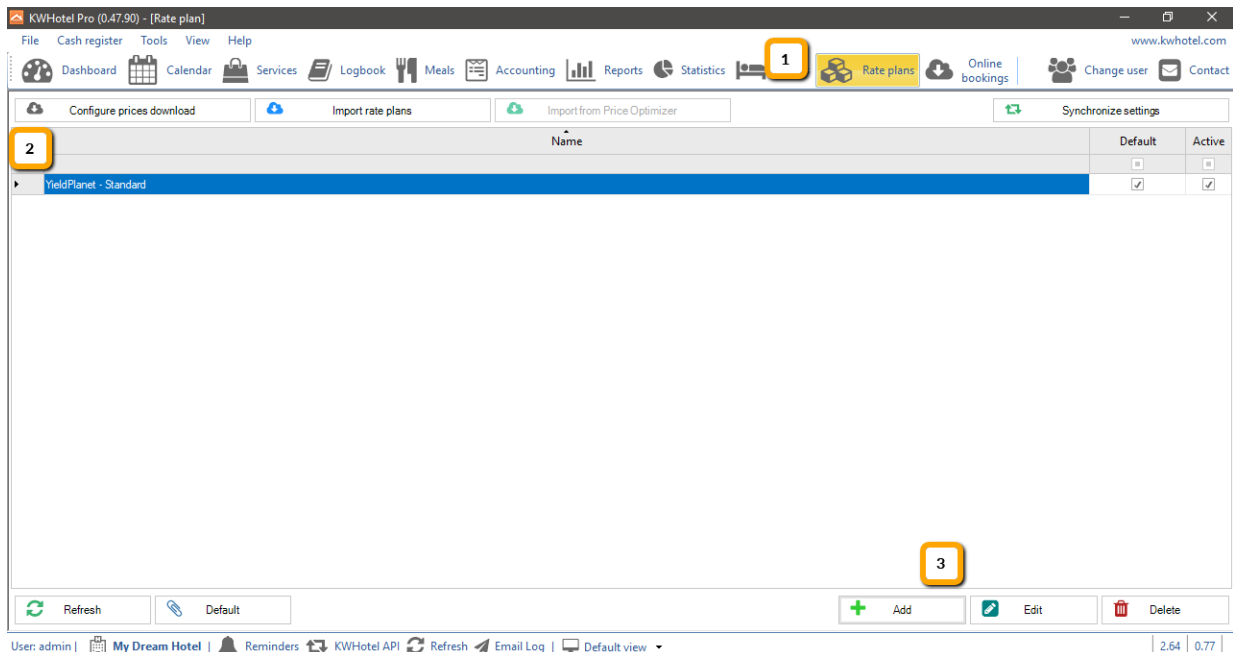
1. How to extend synchronization periods

Attention! The availability synchronization period can only be extended for days where there are prices inserted in the channel manager.

For this reason, please make sure the prices for next year are already inserted in the channel manager.

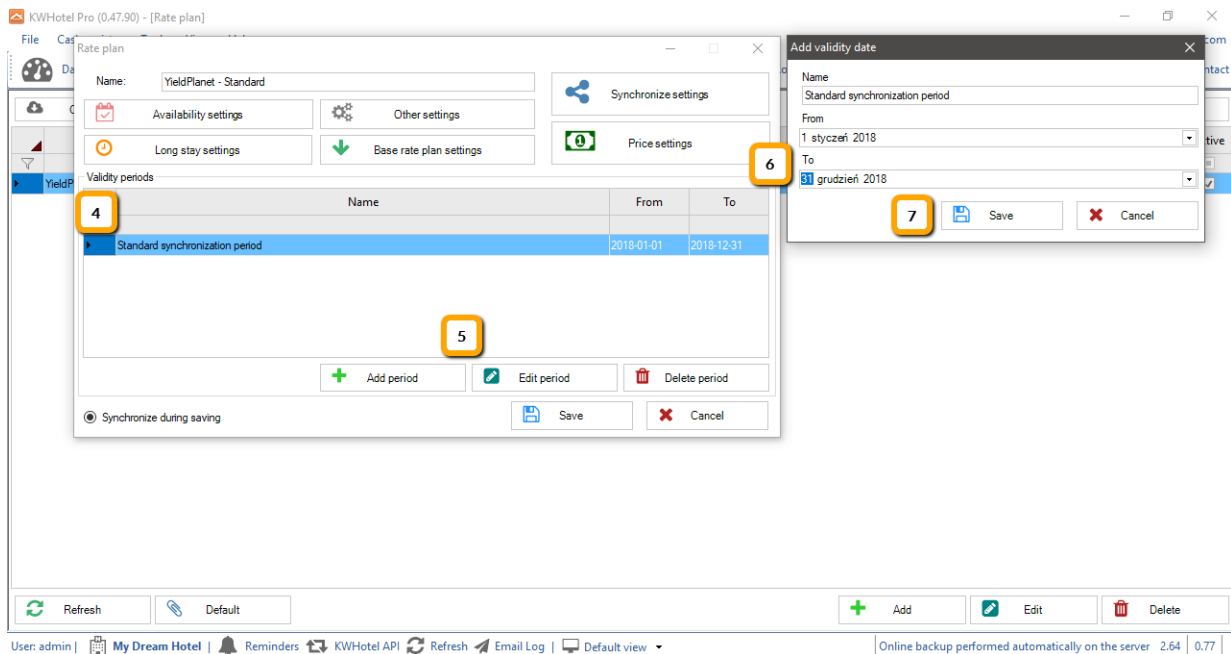
Step by step instruction on how to extend the synchronization periods:

1. Go to the "Rate plans" module
2. Select the rate plan where you wish to extend the availability synchronization period.
3. Double click on the rate plan`s name or hit the "Edit" button.

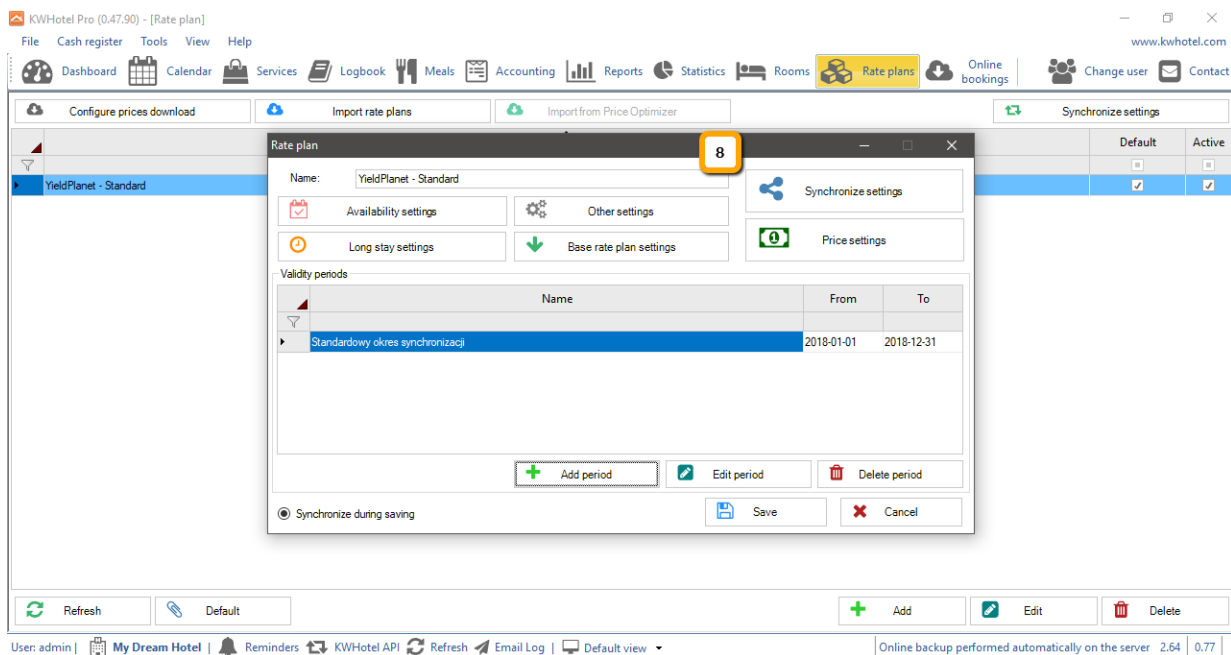


The screenshot shows the KWHotel Pro interface. The top navigation bar includes 'Rate plans' (highlighted with a yellow box and '1'). Below the navigation bar, there are buttons for 'Configure prices download', 'Import rate plans', and 'Import from Price Optimizer'. A table lists rate plans, with 'YieldPlanet - Standard' selected (highlighted with a yellow box and '2'). The table has columns for 'Name', 'Default', and 'Active'. At the bottom right, there are buttons for 'Add', 'Edit' (highlighted with a yellow box and '3'), and 'Delete'. The bottom status bar shows 'User: admin | My Dream Hotel | Reminders | KWHotel API | Refresh | Email Log | Default view | 2.64 | 0.77'.

4. On the list, select the main availability period which you wish to extend.
5. Double click on the selected period or hit the "Edit" button.
6. In the "To" field, extend the synchronization period. Remember that this period must contain prices in the channel manager.
7. Having extended the date, click the "Save" button.

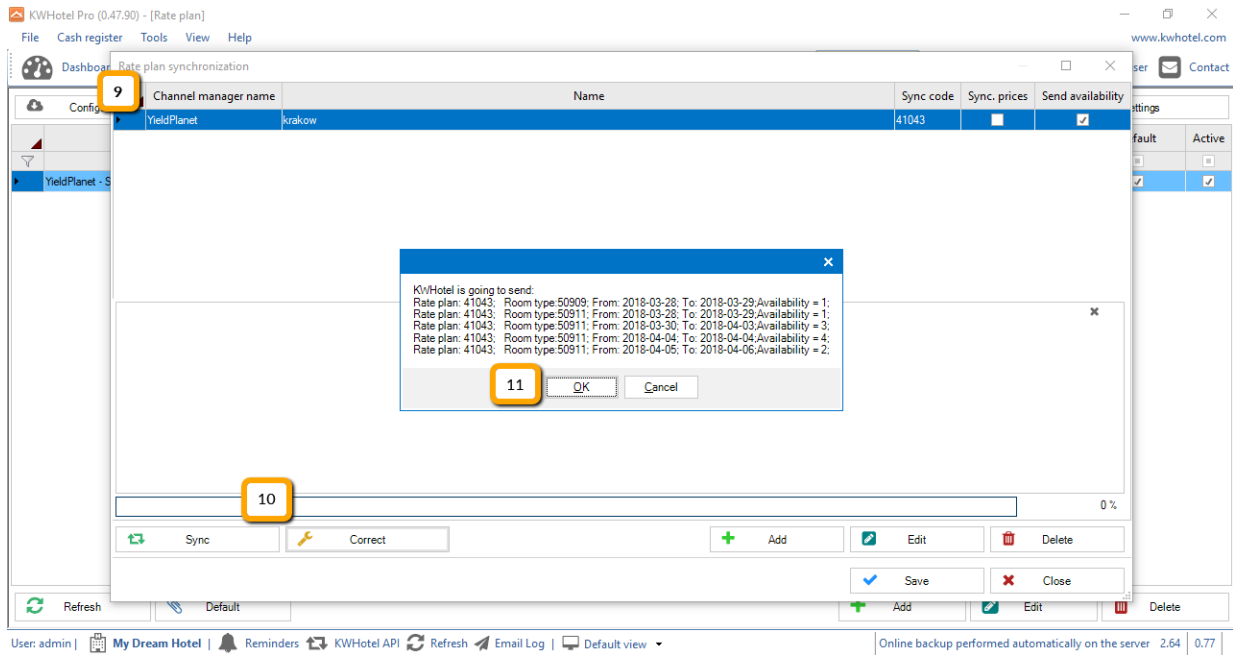


8. Click the "Synchronize settings" button.



9. On the list of active synchronizations, select connection where you wish to send the extended availability to.
10. Click the "Correct" button.
11. If you receive a message, informing about differences in availability, please press the "OK" button.

Attention! Steps 9,10 and 11 must be repeated for every connection, displayed on the list.



Congratulations! You have uploaded availability for further periods!

If you have more synchronized rate plans in KWHotel, just repeat the above steps.